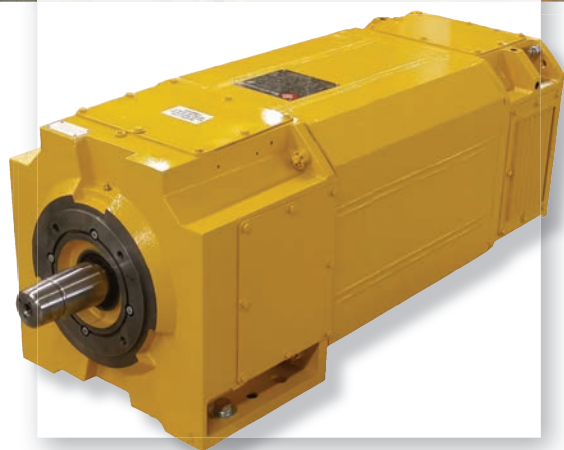




Ward Leonard

Excellence in Motor and Control Solutions™

450 HP AC Drilling Motor – WL250040



High Power Density Technology

Up To 450 HP in a Standard 400 HP Frame

Drill deeper, faster and with more efficiency with High Power Density motors from Ward Leonard. Utilizing proprietary intra-slot cooling technologies, the WL250040 is engineered to deliver **more horsepower and torque** than similar motors, and to withstand rigorous high shock and vibration conditions for decades of continuous service in harsh environments.

Standard Features

- ♦ 4 pole stator
- ♦ Cast aluminum rotor bars
- ♦ Certified Class H insulation
 - Glass sleeving on bolted wire connections
 - Fully vacuum impregnated
 - Tested for 4 hours under water at 500 V
- ♦ 4140 and 4340 alloy shafts standard
- ♦ Six 100Ω platinum RTDs; 2/phase embedded in stator

- ♦ Shaft seals and oil slingers on the drive and non-drive sides
- ♦ Designed for Variable Frequency Drive operation (VFD duty)
- ♦ Designed for high shock environments
- ♦ Heater
- ♦ IP 44 motor enclosure
- ♦ ISO 9001:2008-certified
- ♦ ATEX and CSA-approved

Optional Features

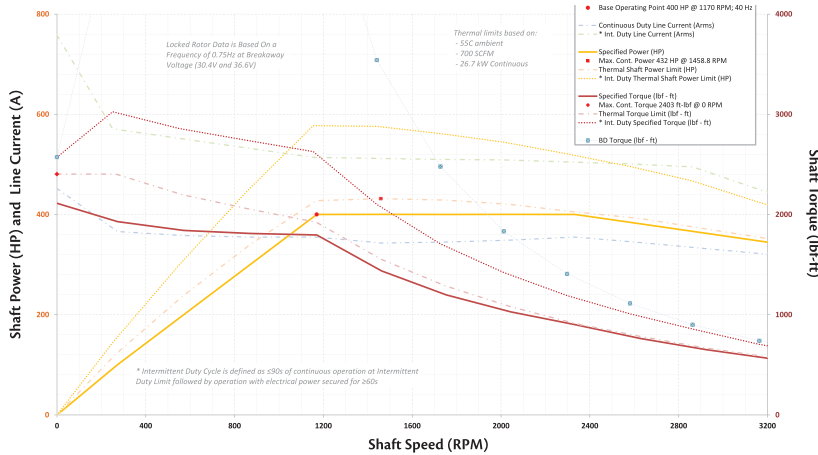
- ♦ Encoder
- ♦ Bearing RTD
- ♦ Blower assembly
- ♦ Air pressure switch
- ♦ IP 56 junction box
- ♦ ABS certification



450 HP AC Drilling Motor



Speed - Torque Performance That Leads the Industry

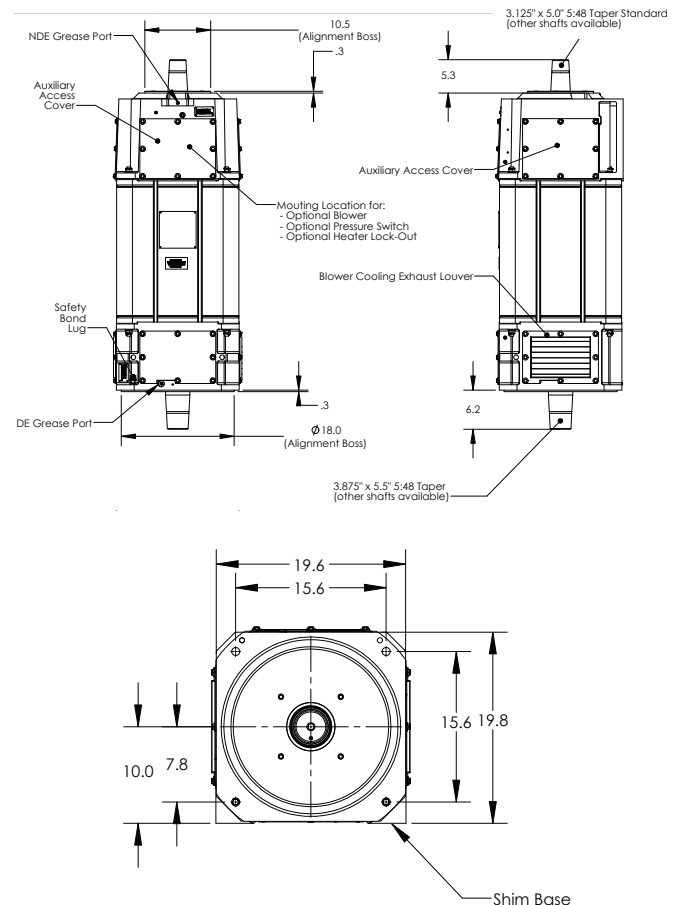


Critical Data

Model number	WL250040
Voltage (AC)	575 ±10%
Current (Amps)	410
Rated Speed	1161 RPM
Torque (lbf-ft)	1810 at rated speed
HP	450 at rated speed
Max. permissible speed	3200 RPM
Base motor weight	2,800 lbs.
Rotor weight	800 lbs
Recommended blower CFM	900
Nominal resistance / phase @ 25 °C	0.0139
Rotor balance	20.4 gram inches
Standard bearing grease	Mobil Unirex EP 2 *
Megger resistance	20 MΩ

* Others available upon request.

Dimensions



Ward Leonard
 Excellence in Motor and Control Solutions™

Ward Leonard is a global provider of highly engineered motors, controls and integrated solutions that power Oil & Gas exploration. We provide benchmark performance, productivity, durability and customer support primarily for Top Drives, Mud Pumps, Draw Works, Rotary Tables, Engine Controls and Control Houses. Learn more at www.wardleonard.com.

401 Watertown Road, Thomaston, CT 06787
 P: 860.283.5801 | F: 860.283.5777 | sales@wardleonard.com | WardLeonard.com