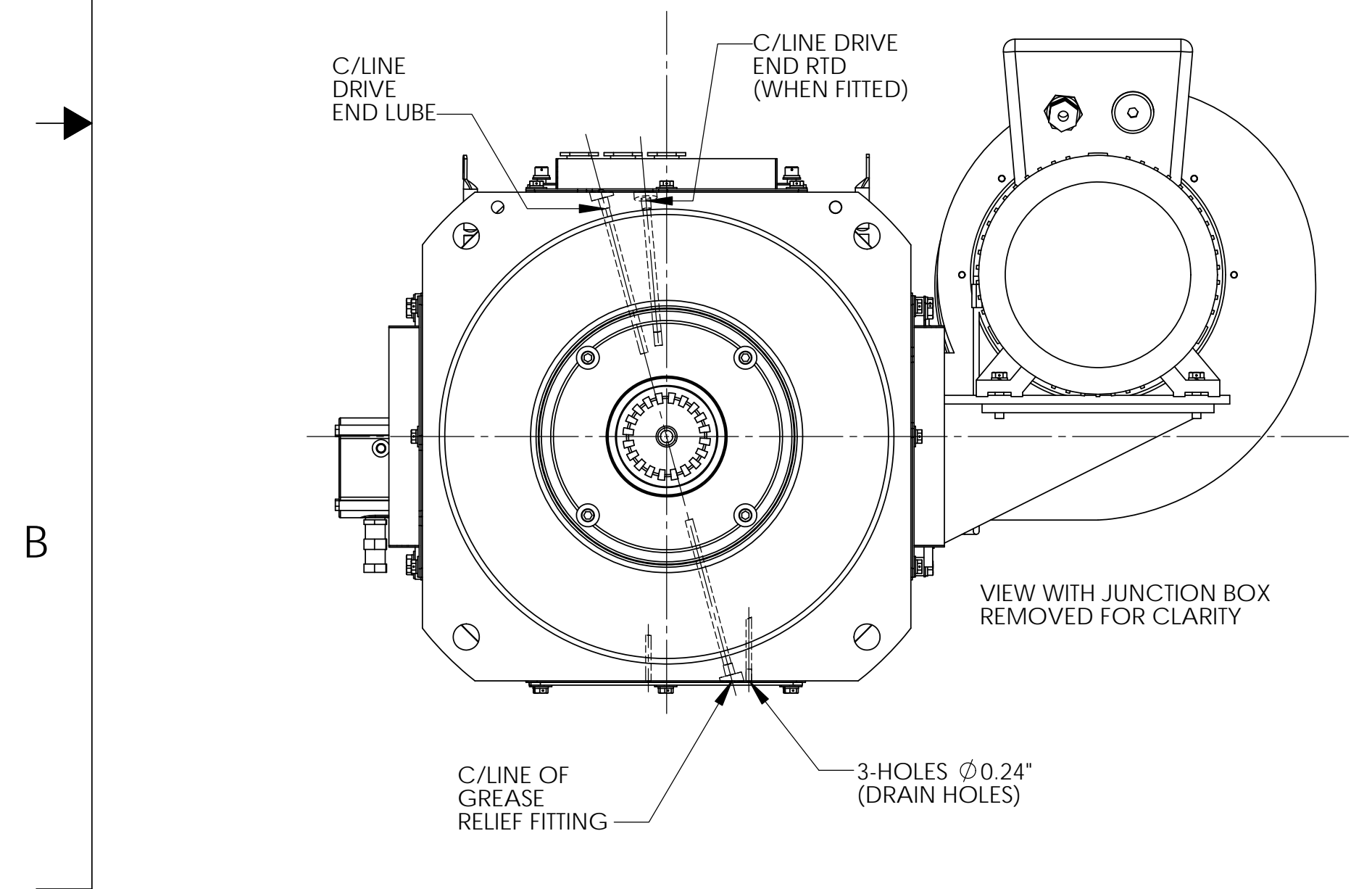
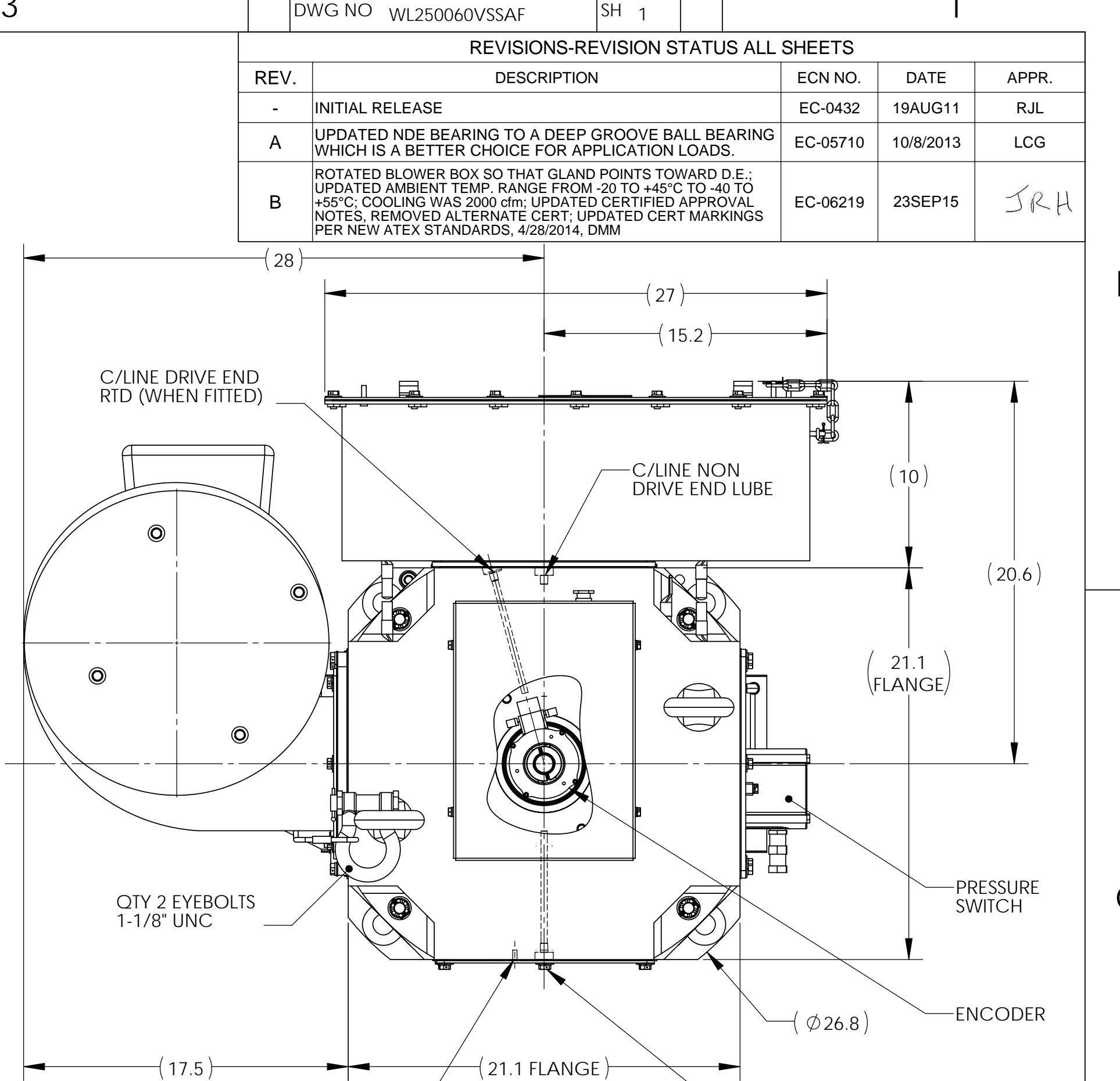
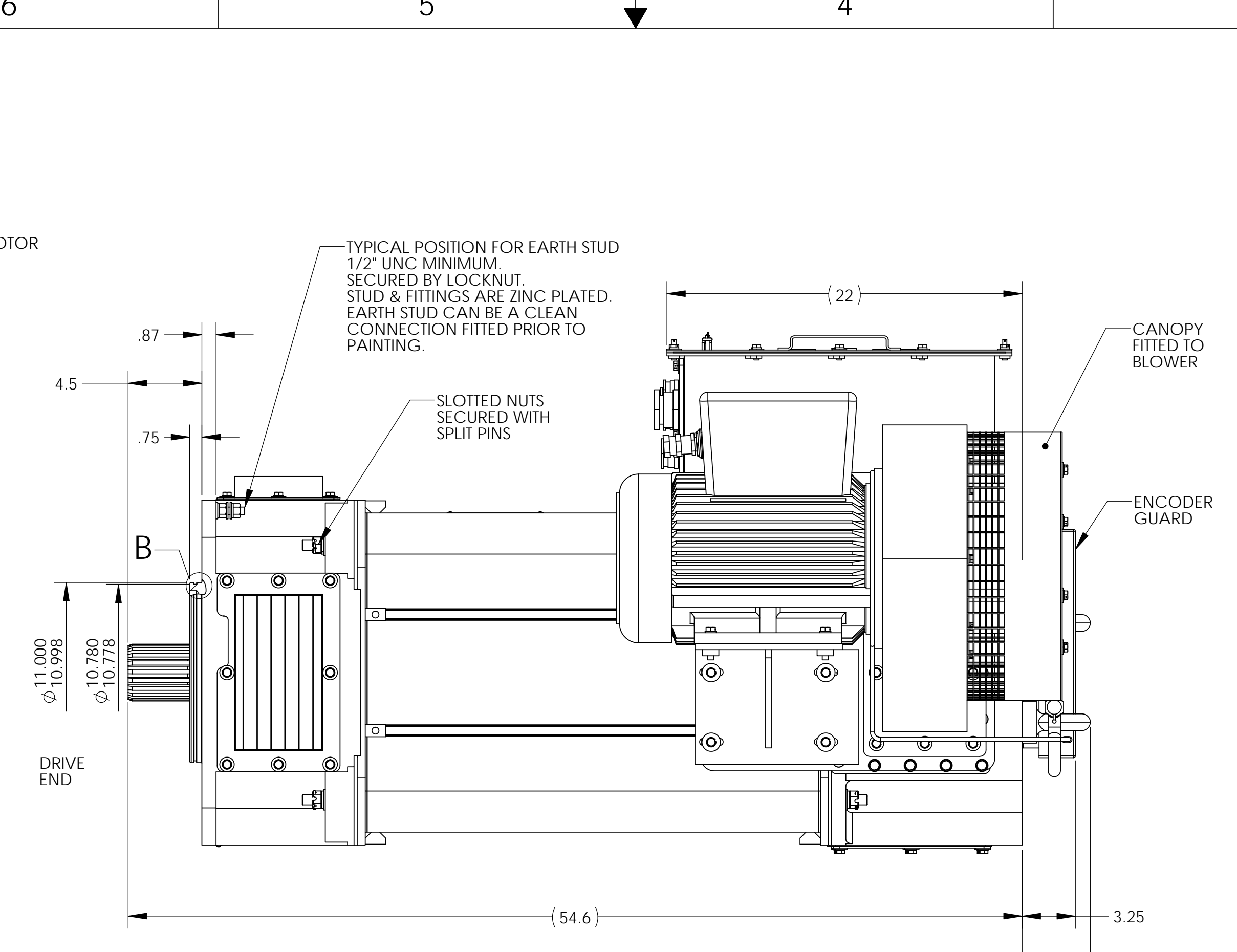
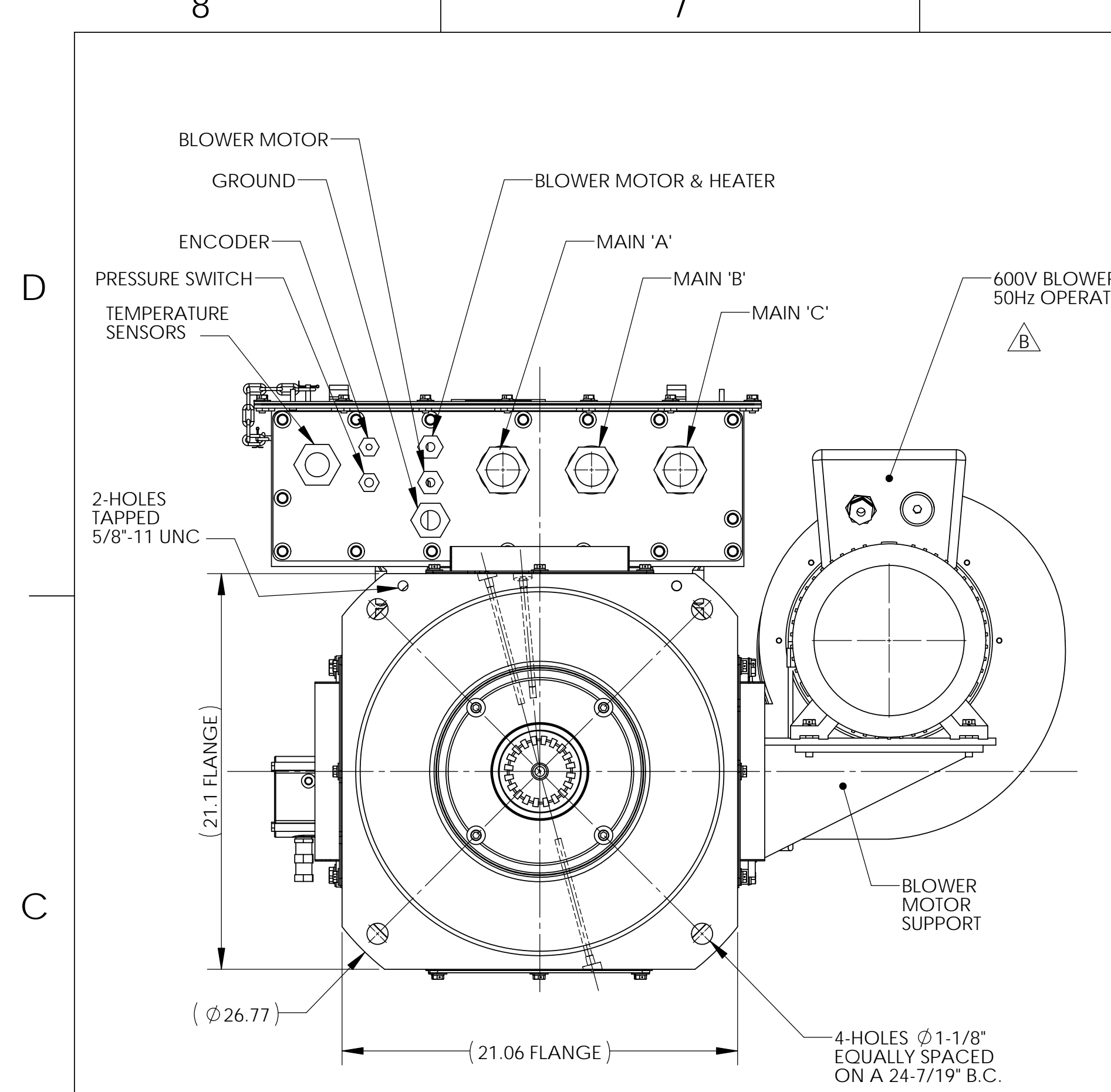


DWG NO	WL250060VSSAF	SH	1	1	
REVISIONS-REVISION STATUS ALL SHEETS					
REV.	DESCRIPTION	ECN NO.	DATE	APPR.	
-	INITIAL RELEASE	EC-0432	19AUG11	RJL	
A	UPDATED NDE BEARING TO A DEEP GROOVE BALL BEARING WHICH IS A BETTER CHOICE FOR APPLICATION LOADS.	EC-05710	10/8/2013	LCG	
B	ROTATED BLOWER BOX SO THAT GLAND POINTS TOWARD D.E.; UPDATED AMBIENT TEMP. RANGE FROM -20 TO +45°C TO -40 TO +55°C; COOLING WAS 2000 cfm; UPDATED CERTIFIED APPROVAL NOTES, REMOVED ALTERNATE CERT. UPDATED CERT MARKINGS PER NEW ATEX STANDARDS, 4/28/2014, DMM	EC-06219	23SEP15	JRH	



EXTERNAL INVOLUTE SPLINE DATA TO ANSI B92.1-1996. (EXCEPT MAJOR DIAMETER TO CUSTOMER SPECIFICATION). (SPLINE DIMENSIONS ARE IN INCHES).

FLAT ROOT SIDE FIT	
TOLERANCE CLASS	5
NUMBER OF TEETH	20
SPLINE PITCH	6/12
PRESSURE ANGLE	30°
BASE DIA	Ø 2.886751 REF
PITCH DIAMETER	Ø 3.333333 REF
MAJOR DIAMETER (CUST SPEC)	Ø 3.465 / 3.455
FORM DIAMETER	Ø 3.160
MINOR DIAMETER	Ø 3.093 MIN
CIRCULAR TOOTH THICKNESS (MAX EFFECTIVE)	0.2618
CIRCULAR TOOTH (MIN ACTUAL)	0.2585
MIN. MEASUREMENT OVER PINS (REF)	3.8225 REF
PIN DIAMETER	0.3200
SPLINE END ONLY INDUCTION HARDENED TO Rc 48 MIN.	

NAMEPLATE DATA:
 600 HP
 575 VOLTS
 580 AMPS
 60 Hz
 610 AMPS FULL LOAD
 296 AMPS NO LOAD
 3 PHASE
 6 POLES
 1180 RPM
 2360 RPM MAX
 IP 44
 IC 17

TORQUE 2670 lb-ft (3620 Nm)
 COOLING 1400cfm min
 BLOWER MOTOR SUPPLY 50Hz
 WEIGHT 4000 lbs (APPROX)

CERTIFICATIONS
 CE 0158 Ex II Gc2 T3 Exe IIC T3 Gb

SIRA 08ATEX3138X - INVERTER DUTY MOTOR
 ABB DRIVE TYPE ACS 800 07 0870/7
 AMBIENT -40°C to +55°C

LEADS TO BE SECURED INSIDE NON-DRIVE END MOTOR COVERS FOR TRANSIT.

BEARINGS:
 DRIVE END - N222 RADIAL CYLINDRICAL ROLLER BEARING (110 X 200 X 38).
 NON-DRIVE END - 6222 C3 DEEP GROOVE BALL BEARING (110 X 200 X 38).

OIL SEALS:
 DRIVE END INTERNAL - GACO MIS.412 OR EQUIVALENT.
 MATERIAL - VITON 75 (4-3/4" X 5-3/4" X 1/2")

DRIVE END EXTERNAL - GACO SM11013012 OR EQUIVALENT.
 MATERIAL - VITON 75 (110mm X 130mm X 12mm)

NON-DRIVE END EXTERNAL - GACO MIS.413 OR EQUIVALENT.
 MATERIAL - VITON 75 (4-3/16" X 5-1/4" X 1/2")

'O' RING - PARKER 2-275
 MATERIAL - ETHYLENE PROPYLENE (10.484" I/D X 0.139" SECT.)

CONNECTION TO MOTOR CABLES MUST BE MADE WITH SUITABLE ATEX APPROVED CONNECTORS (PLUG/SOCKET), FITTED BY SUITABLY TRAINED PROFESSIONAL. DO NOT SEPARATE CABLE CONNECTORS WHEN ENERGIZED. DO NOT OPEN TERMINAL BOX LID WHEN MOTOR IS ENERGIZED. CABLES MUST BE SUITABLY SECURED AT REGULAR INTERVALS.

THE PRESSURE SWITCH AND ENCODER MUST BE WIRED THROUGH AN INTRINSIC SAFETY BARRIER. THIS MOTOR DOES NOT INCLUDE AN INTRINSIC SAFETY BARRIER.

GASKET FITTED UNDER ALL PLATES ON NON-DRIVE END BRACKET. GASKET FITTED UNDER ENCODER GUARD ON NON-DRIVE END BRACKET. GASKET FITTED UNDER TERMINAL BOX ON NON-DRIVE END BRACKET. GASKET FITTED UNDER ADAPTOR PLATE FOR BLOWER ON NON-DRIVE END BRACKET. GASKET FITTED BETWEEN BLOWER AND ADAPTOR PLATE ON NON-DRIVE END BRACKET.

GASKET MATERIAL 60 DUROMETER SILICONE OR EQUIVALENT. GASKET MATERIAL MUST BE ONE PIECE - CENTER TO BE REMOVED ONLY. DO NOT CUT MATERIAL SURROUNDING HOLE.

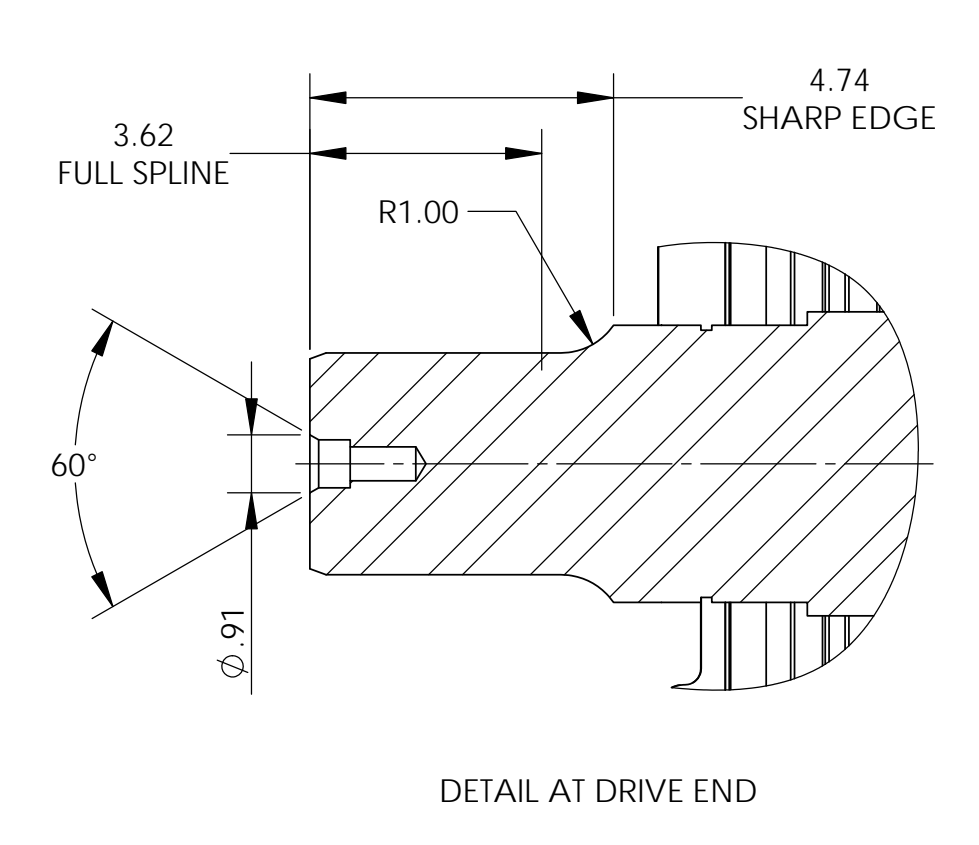
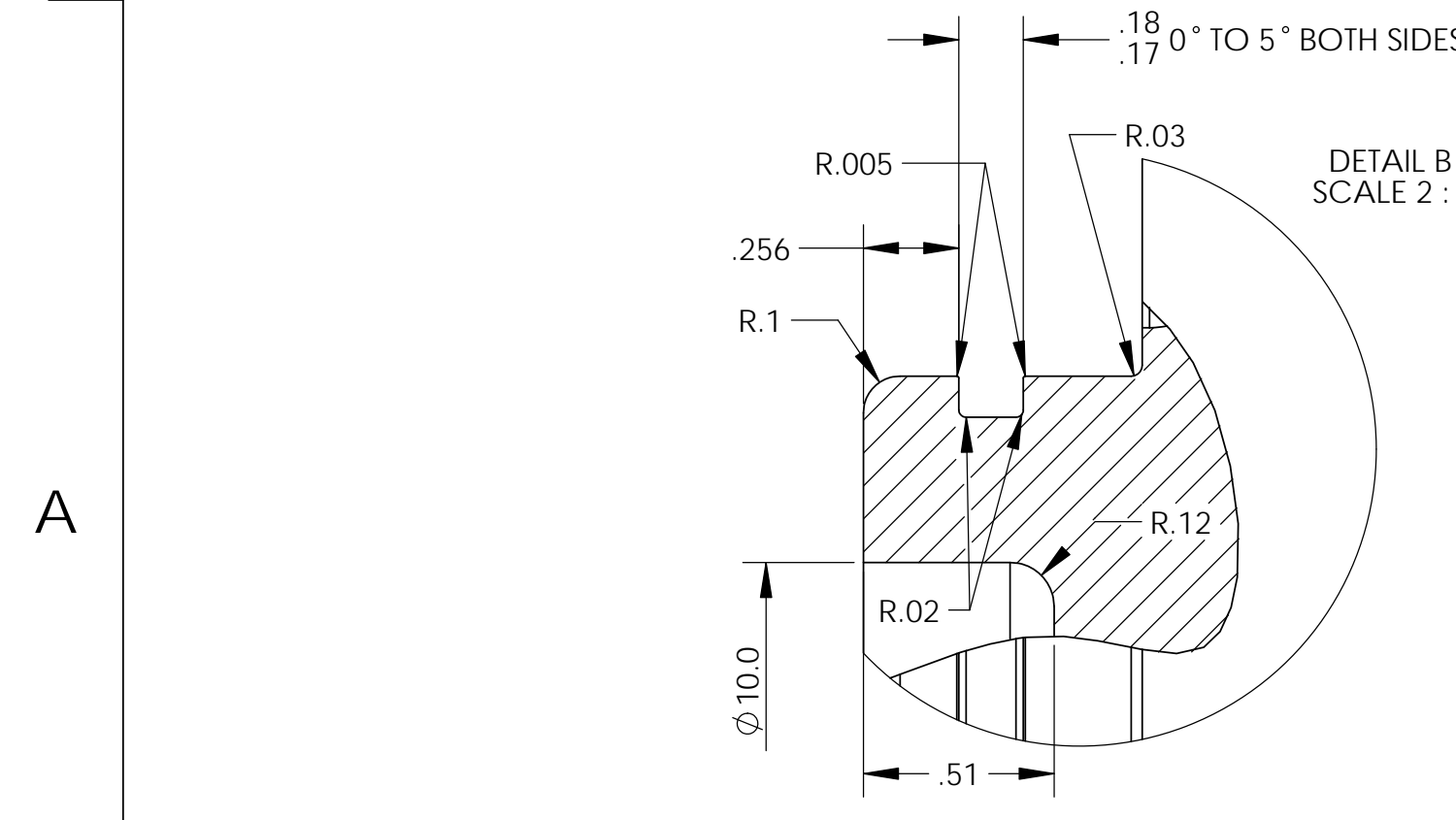
BLOWER OR DUCTING FOR AIR FLOW MAY BE MADE TO EITHER OF 2 SIDE OPENINGS AT THE NON-DRIVE END.

ALL BOLTS ARE SECURED WITH LOCKWASHER AND SAFETY WIRE WHERE POSSIBLE. BLOWER SUPPORT BOLTS TO BE SECURED WITH LOCTITE 242 OR EQUIVALENT.

BLOWER MOTOR AND POSITION OF ITS TERMINAL BOX MAY DIFFER FROM THAT SHOWN ON THE DRAWING.

SEE WORK ORDER OR PO FOR FINISH DETAILS.

DIMENSIONS IN BRACKETS ARE REFERENCE DIMENSIONS.



THIS DRAWING RELATES TO A CERTIFIED PRODUCT AND MUST NOT BE REVISED WITHOUT APPROVAL OF THE AUTHORIZED PERSON.

SEE WL INSTRUCTION EOI 04-0025 FOR ASSOCIATED CERTIFIED DRAWING(S).

REF IEC 60079-0.

GASKET TO BE ONE PIECE. DO NOT CUT MATERIAL SURROUNDING HOLES.

SILICONE RUBBER PER ASTM D2000 M1 GE605, 70 SHORE A DUROMETER

ANSI-INCH TOLERANCES UNLESS OTHERWISE SPECIFIED: Linear Dimensions: X ± 1/16" X/Y ± 1/16" X.X ± 0.04 X.XX ± 0.02 X.XXX ± 0.005 Angular Dimensions: X ± 1° X.X ± 0.5°	MATERIAL: FINISH: SURFACE FINISH 125/	©2014 Ward Leonard Ward Leonard - CT, LLC Thomaston, CT 06787 DRAWN BY: PJM DRAWN DATE: 9AUG11 APPROVED BY: RJL APPROVED DATE: 19AUG11	THIS DRAWING IS THE PROPERTY OF WARD LEONARD - CT, LLC. THOMASTON, CT. THIS DOCUMENT AND/OR THE INFORMATION CONTAINED THEREIN SHALL NOT BE DUPLICATED, USED, LOANED, OR DISCLOSED IN WHOLE OR IN PART FOR THE MANUFACTURE OR PROCUREMENT OF ANY ITEM OR ITEMS SHOWN ON OR THEREBY WITHOUT THE WRITTEN CONSENT OF WARD LEONARD - CT, LLC. THIS PRINT IS LOANED SUBJECT TO RETURN ON DEMAND.												
BREAK ALL SHARP EDGES DO NOT SCALE DRAWING		THIRD ANGLE PROJECTION	<table border="1"> <tr> <th colspan="4">OUTLINE DRAWING AC MOTOR 600 HP - ATEX</th> </tr> <tr> <td>SIZE D</td> <td>CAGE NO 63743</td> <td>DWG NO WL250060VSSAF</td> <td>REV B</td> </tr> <tr> <td>SCALE: 1:6</td> <td>WT: 4677.991 LBS</td> <td colspan="2">SHEET 1 OF 1</td> </tr> </table>	OUTLINE DRAWING AC MOTOR 600 HP - ATEX				SIZE D	CAGE NO 63743	DWG NO WL250060VSSAF	REV B	SCALE: 1:6	WT: 4677.991 LBS	SHEET 1 OF 1	
OUTLINE DRAWING AC MOTOR 600 HP - ATEX															
SIZE D	CAGE NO 63743	DWG NO WL250060VSSAF	REV B												
SCALE: 1:6	WT: 4677.991 LBS	SHEET 1 OF 1													