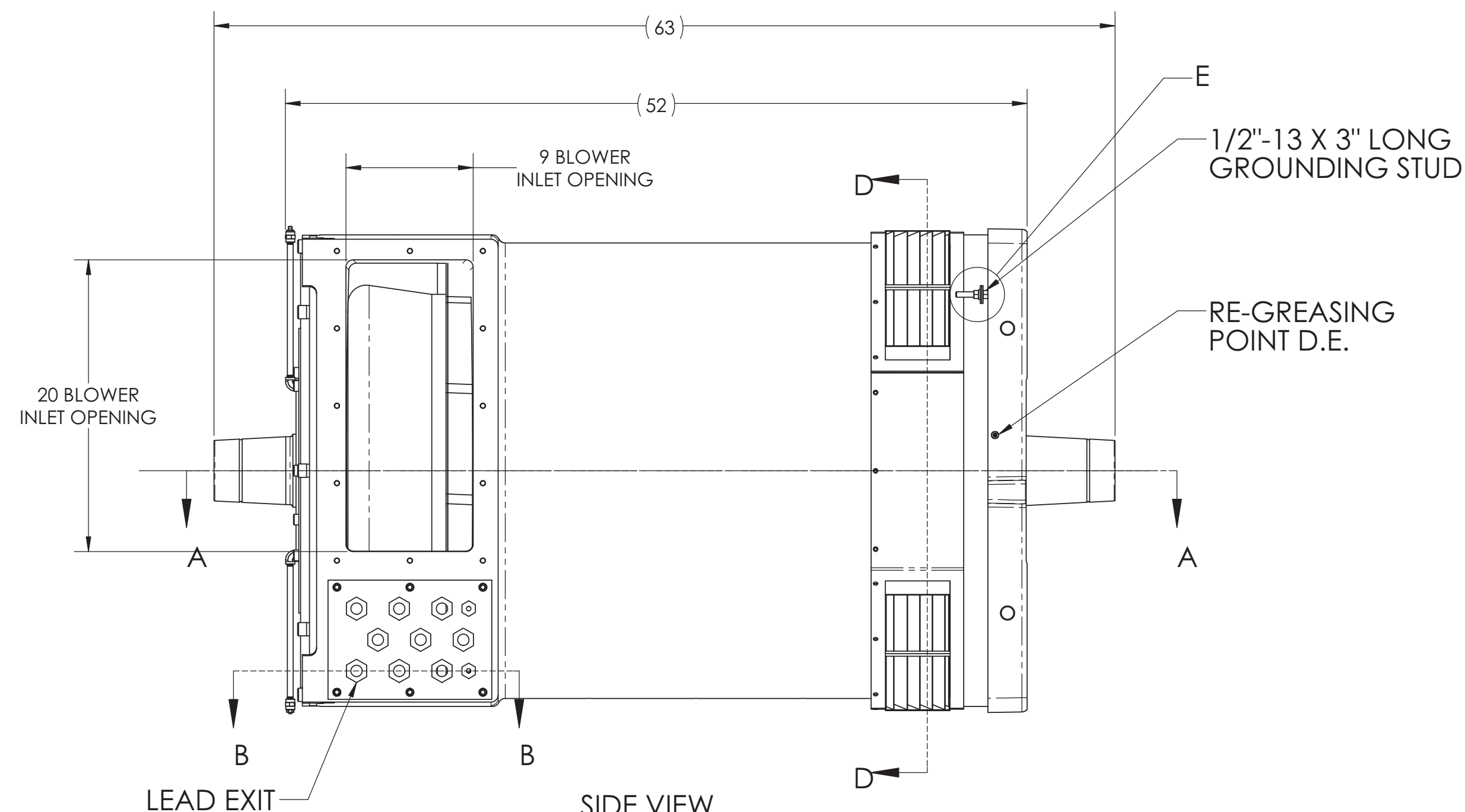
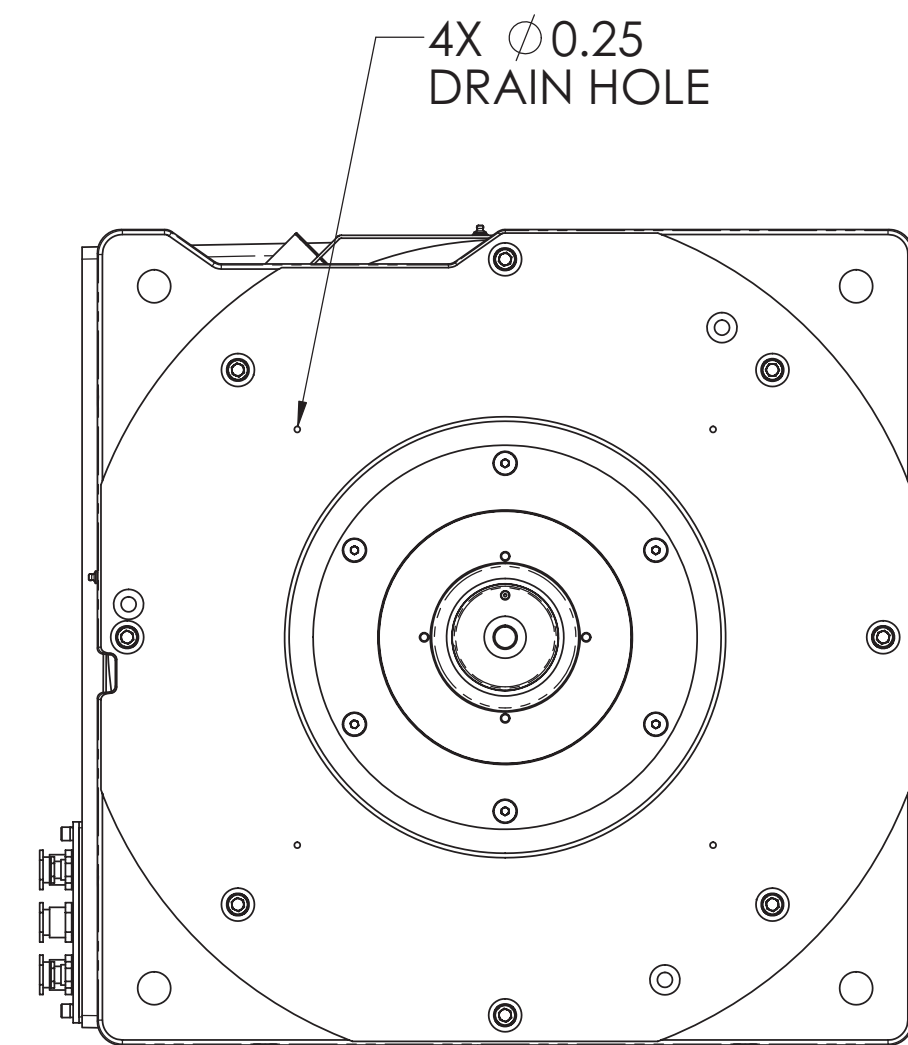


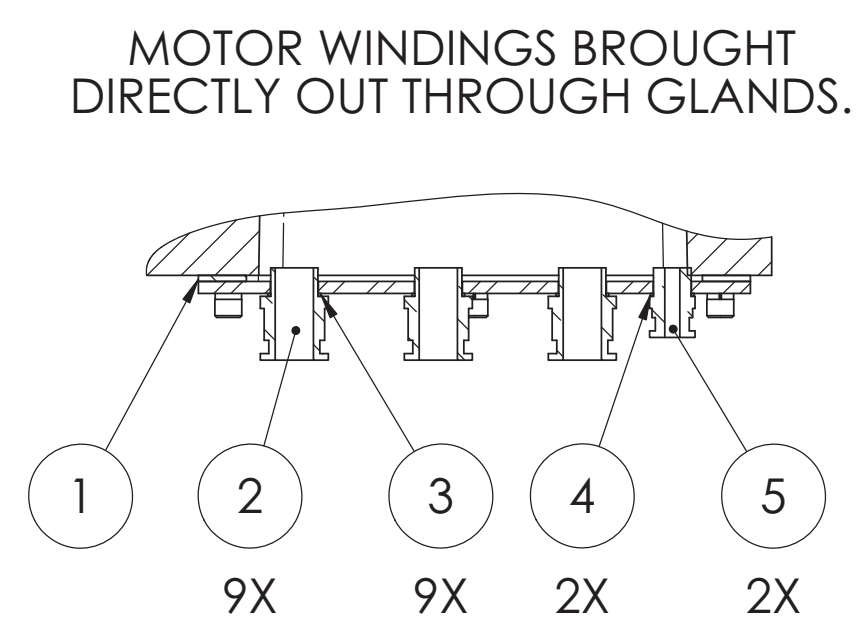
OPPOSITE DRIVE END VIEW



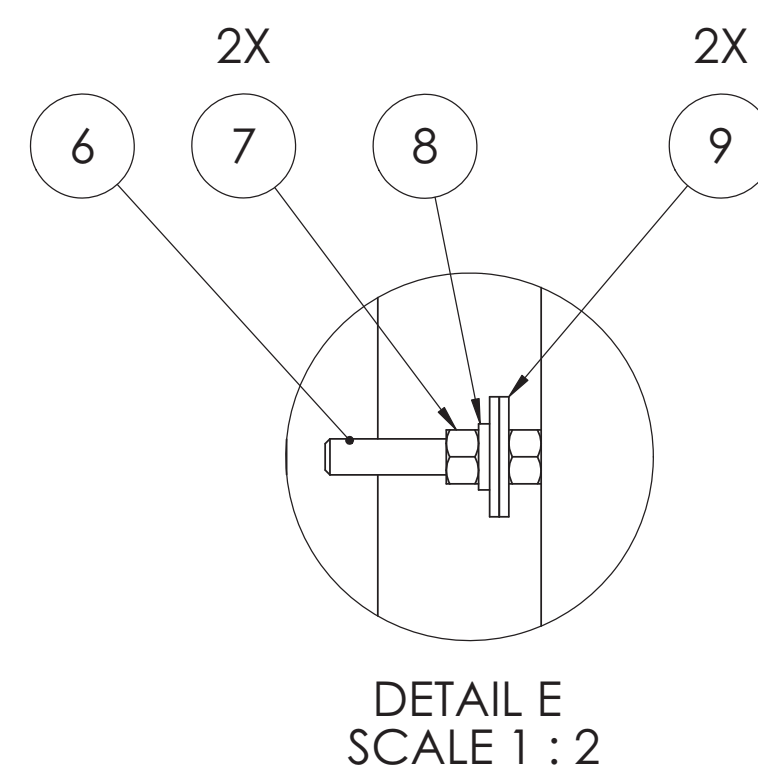
SIDE VIEW



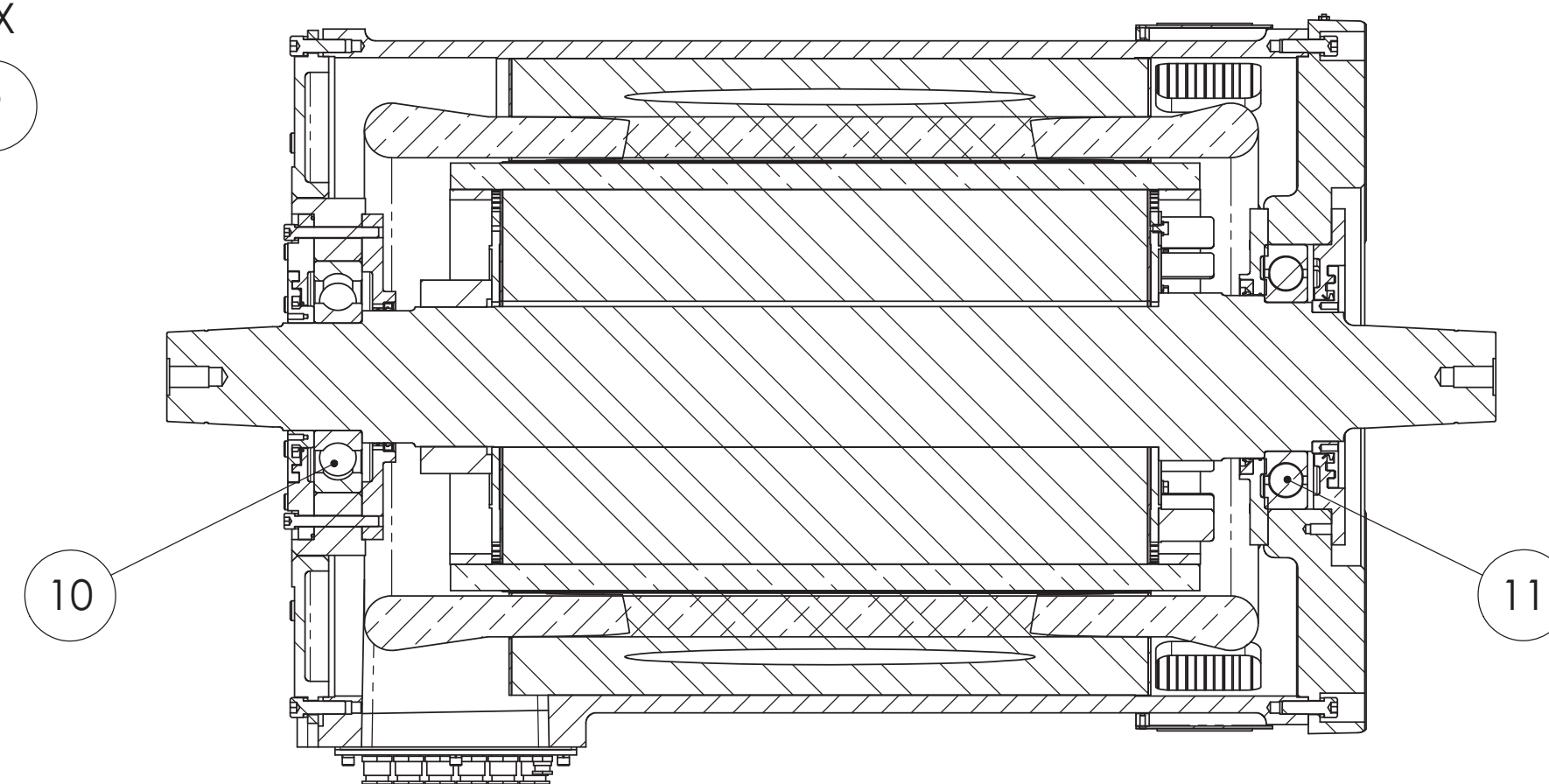
DRIVE END VIEW



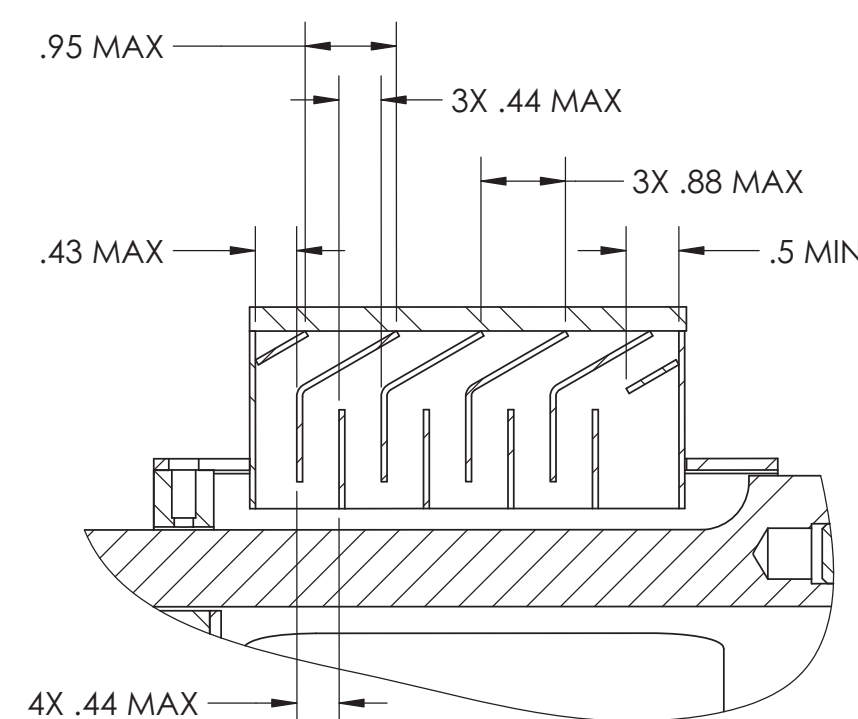
SECTION B-B
TYPICAL CABLE EXIT FROM MOTOR
SCALE 1 : 4



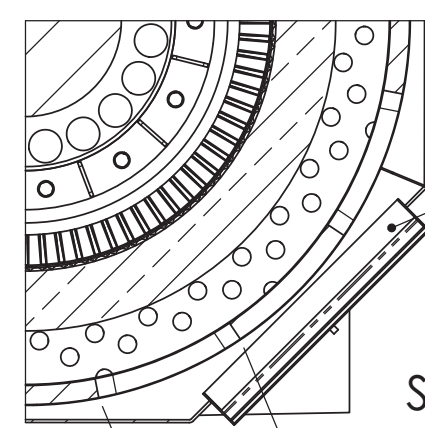
DETAIL E
SCALE 1 : 2



SECTION A-A



SECTION C-C
TYPICAL AIR EXHAUST VENT
MIN. MATERIAL THICKNESS 16GA (0.06")
SCALE 1 : 2



SECTION D-D

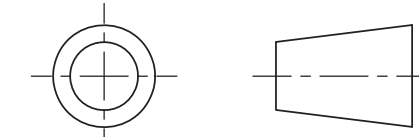


8X 6.4 BLOWER
OUTLET OPENING

THIS DRAWING IS THE PROPERTY OF WARD LEONARD ELECTRIC COMPANY INC., THOMASTON, CT. THIS DOCUMENT AND/OR THE INFORMATION CONTAINED THEREIN SHALL NOT BE DUPLICATED, USED, LOANED, OR DISCLOSED IN WHOLE OR IN PART FOR THE MANUFACTURE OR PROCUREMENT OF ANY ITEM OR ITEMS SHOWN ON OR THEREBY WITHOUT THE WRITTEN CONSENT OF WARD LEONARD ELECTRIC COMPANY INC.. THIS PRINT IS LOANED SUBJECT TO RETURN ON DEMAND.

UNLESS OTHERWISE SPECIFIED
DIMENSIONS ARE IN INCHES
TOLERANCES ARE:
DECIMALS: X.X ±0.04
DECIMALS: X.XX ±0.02
DECIMALS: X.XXX ±0.005
ANGLES: X.X ±0.5°

THIRD ANGLE PROJECTION



MATERIAL:

FINISH:

SURFACE FINISH:

BREAK ALL SHARP EDGES

DO NOT SCALE DRAWING

11	SKF 6236 OR EQUIVALENT
10	SKF 6326M/C3V0L241 OR EQUIVALENT
9	WASHER, FLAT, 3/8, 0.75 OD, STAINLESS STEEL
8	LOCK WASHER, 3/8, 1.00 OD, STAINLESS STEEL
7	NUT, HEX 3/8-16 UNC 2B., STAINLESS STEEL
6	GROUNDING ROD, STAINLESS STEEL
5	CABLE GLAND M32, HAWKE TYPE 501/421/Os/M20 [BASEEFA06ATEX0056X] OR EQUIVALENT.
4	IP WASHER M20, FIBER OR NYLON
3	IP WASHER M32, FIBER OR NYLON
2	CABLE GLAND M32, HAWKE TYPE 501/421/C/M32 [BASEEFA06ATEX0056X] OR EQUIVALENT.
1	GASKET, SILICONE BASED GASKET MATERIAL, -60 °C TO +225 °C
ITEM	DESCRIPTION



Ward Leonard Ward Leonard Electric Company Inc.
Thomaston, CT 06787

	TITLE
--	-------

TITLE OUTLINE FOR CERTIFIED 1350HP OIL PATCH MOTOR

	SIZE
	D

CAGE CODE	63743
-----------	-------

DWG NO

WL24A135 CSA

REV
-

SCALE: 1:8

WT: 14508.9887 LBS

SHEET 1 OF 2

[illegible]