



# Ward Leonard

Excellence in Motor and Control Solutions™

## 600 HP AC Drilling Motor – WL381060



### For Top Drive Applications

### Benchmark Performance for Oil & Gas Applications

In the oil and gas industries, motors must have optimal performance, reliability and long-life to withstand the most demanding environments. The 600 HP Drilling Motor was designed to endure rigorous high shock and vibration conditions for decades of continuous service in the harshest rig duty environments. The motor features a certified Class H - fully taped and sealed - insulation system that provides a solid barrier to dust, sand, oil and water and helps to extend the life of the motor.

#### Standard Features

- ◆ 6 pole stator with form wound windings
- ◆ Extra tough pitch copper rotor bars
- ◆ Certified Class H sealed insulation
  - Fully taped with silicon tape
  - Glass sleeving on bolted wire connections
  - Fully vacuum impregnated
  - Tested for 4 hours under water at 500 V
- ◆ 4140 and 4340 alloy shafts available
- ◆ Six 100Ω platinum RTDs; 2/phase embedded in stator

- ◆ Shaft seals on the drive and non-drive sides
- ◆ Designed for Variable Frequency Drive operation
- ◆ Designed for high shock environments
- ◆ Heater
- ◆ IP 44 motor enclosure
- ◆ ISO 9001:2008-certified
- ◆ ATEX and CSA-approved

#### Optional Features

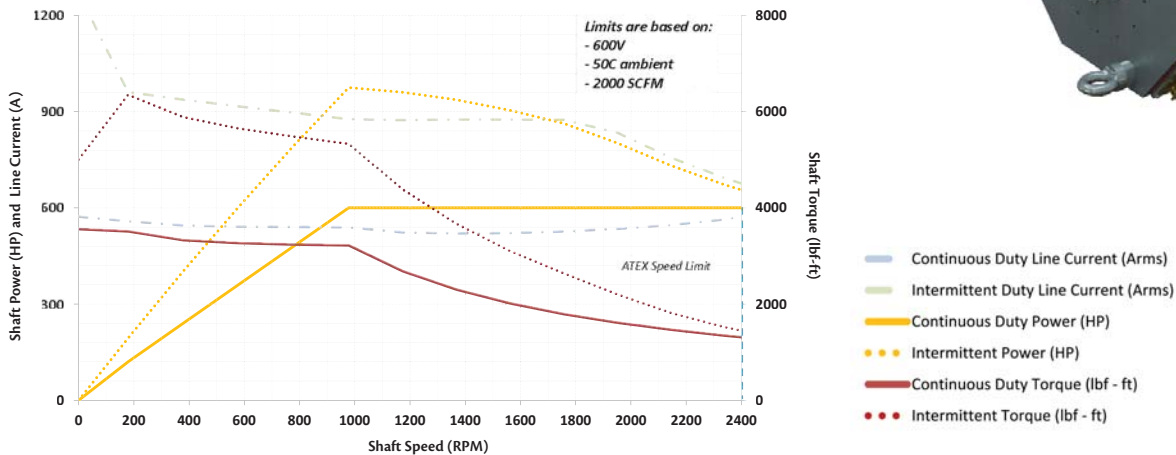
- ◆ Encoder
- ◆ Bearing RTD
- ◆ Blower assembly
- ◆ Air pressure switch
- ◆ IP 56 junction box
- ◆ ABS certification



# 600 HP AC Drilling Motor



## Speed - Torque Performance That Leads the Industry

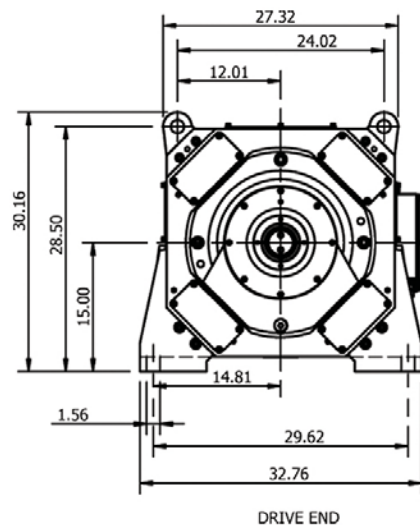


## Critical Data

Model number	WL381060
Voltage (AC)	600 $\pm$ 10%
Current (Amps)	570
Rated Speed	982 RPM
Torque (lb ft)	3210 at rated speed
HP	600 at rated speed
Max. permissible speed	2400 RPM
Base motor weight	4,000 lbs.
Rotor weight	1,100 lbs
Recommended blower CFM	2,000
Nominal resistance / phase @ 25 °C	0.0088 $\Omega$
Rotor balance	28.1 gram inches
Standard bearing grease	Mobil Unirex EP 2 *
Megger resistance	20 M $\Omega$

\* Others available upon request.

## Dimensions



**Ward Leonard**

Excellence in Motor and Control Solutions™

Ward Leonard is a global provider of highly engineered motors, controls and integrated solutions that power Oil & Gas exploration. We provide benchmark performance, productivity, durability and customer support primarily for Top Drives, Mud Pumps, Draw Works, Rotary Tables, Engine Controls and Control Houses. Learn more at [www.wardleonard.com](http://www.wardleonard.com).

401 Watertown Road, Thomaston, CT 06787

P: 860.283.5801 | F: 860.283.5777 | [sales@wardleonard.com](mailto:sales@wardleonard.com) | [WardLeonard.com](http://WardLeonard.com)